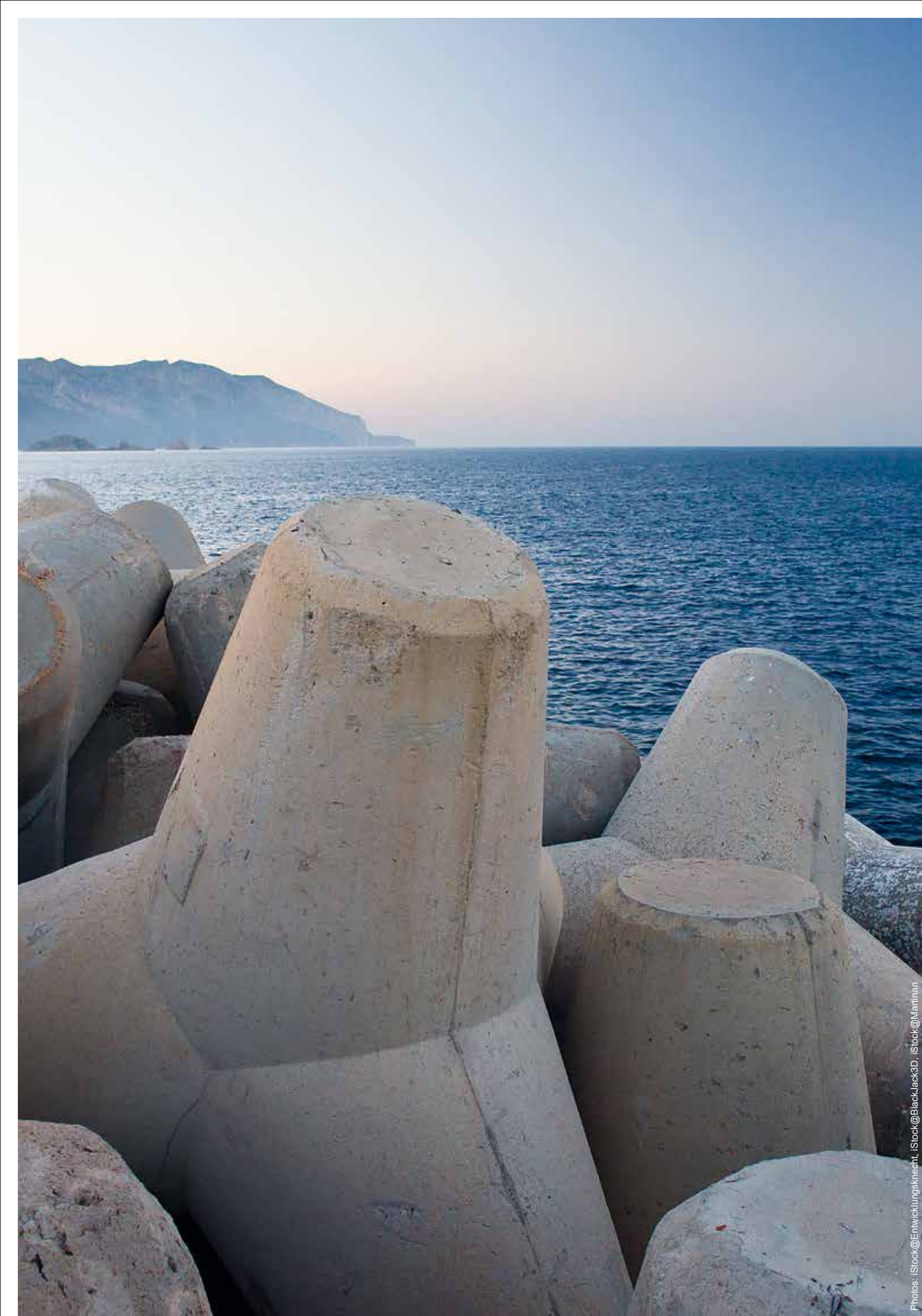


DURAHIT® – WATERPROOFING SYSTEM

Optimum protection for durable and high-quality concrete





Photos: iStock@Entwicklungsneent, iStock@BlackJack3D, iStock@Martinen

Waterproofing system for durable high quality concrete

DURAHIT® – OPTIMUM PROTECTION

Water is the major reason of almost all damages and visual defects in concrete. Penetrating into the inside of building material, it may cause serious problems such as corrosion, salt burst, freeze-thaw damage or efflorescence. DURAHIT® products help to prevent these damages and secure your projects by providing durable protection. The DURAHIT® line allows increased service lives, lower maintenance costs, attractive appearances and a more durable structures.

► The need for waterproofing

Water is the major reason of almost all damages and visual defects in concrete. The porous structure of the building material enables water and dissolved contaminants to penetrate via the capillary suction into the inside of concrete.

This may cause various problems such as corrosion of reinforcing steel, salt burst, or freeze-thaw damage.

► Our waterproofing system

There is no doubt that by stopping concrete from absorbing water, damage is drastically reduced. As water can enter concrete from any side, water repellence should affect the entire concrete structure, not only the top surface. Accordingly our product concept contains integral waterproofing admixtures and crystalline additives. To provide concrete structures and especially their surfaces with even greater resistance, we have developed complementing impregnations.

Ha-Be Products

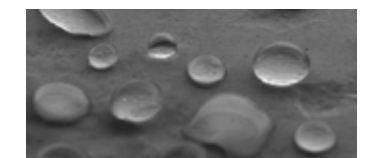
COMPONENTS OF DURAHIT® WATERPROOFING SYSTEM



WATERPROOFING



CRYSTALLINE ADDITIVE



IMPREGNATION



Photo: iStock@frankreporter



Table of content

OUR DURAHIT® SYSTEM

▶ DURAHIT® – THE BRAND	06
▶ ADVANTAGES OF DURAHIT®	08
▶ WATERPROOFING ADMIXTURES	10
▶ CRYSTALLINE ADDITIVES	12
▶ IMREGNATIONS	14



Photo: iStock@rusem

For demanding concrete projects

DURAHIT® – THE BRAND

WHAT IS DURAHIT®

DURAHIT® is a brand dedicated to concrete that is used in projects with advanced requirements on quality and durability. Our DURAHIT® product line has been especially designed to produce and protect this high-quality, durable, and waterproofed concrete. This provides:

- ▶ Powerful protection
- ▶ High in performance
- ▶ Contribution to a durable and sustainable use of concrete

WHICH PRODUCTS ARE INCLUDED?

Our DURAHIT® line includes various products consisting of different compositions and covers:

- ▶ Integral waterproofing admixtures
- ▶ Integral crystalline waterproofing additives
- ▶ Deeply penetrating hydrophobic impregnations

WHAT ARE THEY SUITABLE FOR?

DURAHIT® is designed for concrete performing under challenging conditions. The products support concrete in withstanding extreme weather conditions, marine environments and watery surroundings. The waterproofing products achieves a very effective protection mechanism which provides the following benefits:

- ▶ Improved water impermeability
- ▶ Increased durability
- ▶ Decreased steel corrosion
- ▶ Enhanced resistance against visual deficient signs like effloresces

APPLICATION AREAS

As the included products made of different compositions, our DURAHIT® line covers a wide application area that includes, but is not limited to:

- ▶ Swimming pools and reservoirs
- ▶ Sewage and water treatment plants
- ▶ Drainage constructions and water retaining constructions
- ▶ Foundations and basements floors
- ▶ Concrete walls
- ▶ Precast concrete elements
- ▶ Tunnel and underground constructions
- ▶ Bridge and infrastructure constructions
- ▶ Reinforced concrete constructions in marine environment



One brand – several benefits

ADVANTAGES OF DURAHIT®

TECHNICAL BENEFITS

Since reactions take place inside the matrix of the concrete, DURAHIT® products become an integral part of the concrete mass and thus cannot be removed or worn off later on. Apart from a durable protection, concrete produced or treated with DURAHIT® products impart additional benefits such as:

- ▶ Permanent waterproofing
- ▶ Permanent protection
- ▶ Optimum water repellence
- ▶ Increased oil, fuel and acid repellence
- ▶ Improved freeze-thaw salt resistance
- ▶ Enhanced resistance to defects
- ▶ Decreased risk of steel corrosion

ECONOMICAL & AESTHETICAL BENEFITS

A high-quality and durable protection leads to even further benefits and is subsequently conducive to:

- ▶ Cost reduction for maintenance, repairs, and replacements
- ▶ Preservation of colour and aesthetic appearance
- ▶ Increased service life

ENVIRONMENTAL BENEFITS

DURAHIT® is dedicated to durability and makes an important contribution towards an environment-friendly and energy-saving use of concrete and raw materials

- ▶ Long-term performance of concrete
- ▶ Less replacements
- ▶ Higher durability
- ▶ More sustainability

WATER
PROOFING
ADMIXTURES

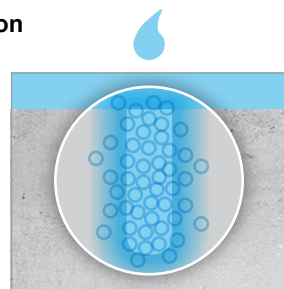
Ha-Be DURAHIT® Waterproofing Admixtures

WHAT DO OUR ADMIXTURES DO?

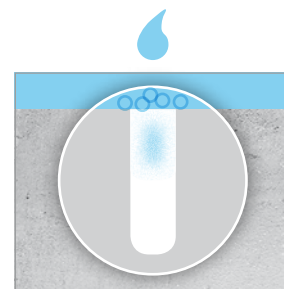
▶ Interrupting the capillary suction



CONCRETE STRUCTURE



NORMAL CONCRETE



HA-BE WATERPROOFED CONCRETE

Photo: iStock@BlackJack3D

Our Durahit® WP-Line

WATERPROOFING ADMIXTURES

APPLICATION RANGE

DURAHIT® WP integral waterproofing admixtures have been designed to be suitable for almost any concrete structure exposed to moisture, salt or salt water, wicking, or water under hydrostatic pressure. Typical applications are:

- ▶ Swimming pools and reservoirs
- ▶ Sewage and water treatment plants
- ▶ Basements and foundations
- ▶ Water retaining and drainage constructions
- ▶ Tunnels and underground structures
- ▶ Concrete constructions in marine environments or with seawater contact

WORKING PRINCIPLE: INTERRUPTION OF CAPILLARY SUCTION

DURAHIT® WP interrupts the capillary suction by lining the capillaries with a hydrophobic material to prevent water being drawn in. This reduces the water uptake significantly. The waterproofing admixtures provide advantages such as:

- ▶ Integral waterproofing
- ▶ Permanent system
- ▶ Does not block the capillary pore structure and allows concrete to breathe

BENEFITS

As DURAHIT® WP becomes an integral part of the concrete matrix, benefits apply to the entire concrete structure and thus achieve a very effective protection mechanism, which provides benefits such as:

- ▶ Optimum water repellence
- ▶ Minimised efflorescence
- ▶ Decreased risk of steel corrosion
- ▶ Reduced risk of carbonation
- ▶ Increased freeze-thaw salt resistance
- ▶ Enhanced durability
- ▶ Attractive long-term appearance
- ▶ Reduced maintenance costs

WATER
PROOFING
ADMIXTURES

CRYSTALLINE
ADDITIVES

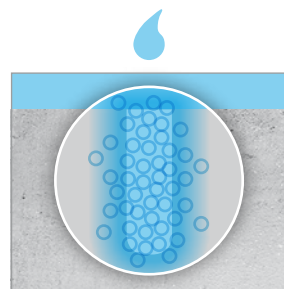
Ha-Be DURAHIT® Crystalline Additives

WHAT DO OUR CRYSTALS DO?

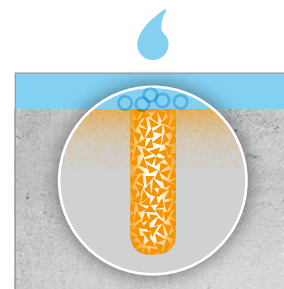
► Forming crystals in concrete



CONCRETE STRUCTURE



NORMAL CONCRETE



HA-BE CRYSTALLISED CONCRETE

Photo: iStock@Martinen

Our Durahit® Crystal Ad-Line

CRYSTALLINE ADDITIVES

APPLICATION RANGE

The reactive, crystalline additives in dry powder form represent the ideal protection system for areas where increased resistance to chemicals, acids, and abrasion is required or whenever the concrete is subject to more extreme and continuous exposures or extreme hydrostatic pressure. Typical applications are:

- ▶ Marine structures like harbours and docks
- ▶ Dams and water reservoirs
- ▶ Water containment structures
- ▶ Swimming pools
- ▶ Tunnel- and underground constructions
- ▶ Waste treatment facilities
- ▶ Basements and foundations
- ▶ Precast concrete

WORKING PRINCIPLE: CRYSTALS BLOCK WATER UPTAKE

At the time of batching, active chemicals diffuse and cause a catalytic reaction, which creates a non-soluble crystalline structure within the pores and capillary tracts of the entire concrete matrix. These crystalline deposits block both pores and micro cracks in the concrete, to prevent the passage of water.

- ▶ Integral system
- ▶ Pores and capillaries are blocked
- ▶ Reactivation whenever water is present

BENEFITS

Any moisture introduced over the lifespan of the concrete will automatically initiate crystallisation, providing a permanent waterproofing protection. The crystalline deposits remain locked in the concrete matrix and reactivate whenever water is present. As the reaction continues over the life of the concrete, the protection lasts as long as the concrete, serving to seal not only initial shrinkage cracks, but also cracks that occur over time.

- ▶ Optimum water repellence
- ▶ Minimised efflorescence
- ▶ Decreased risk of steel corrosion
- ▶ Reduced risk of carbonation
- ▶ Increased freeze-thaw salt resistance
- ▶ Enhanced durability
- ▶ Attractive long-term appearance
- ▶ Reduced maintenance costs

CRYSTALLINE
ADDITIVES

IMPREGNATIONS

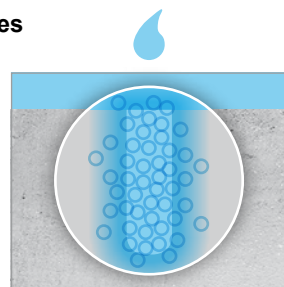
Ha-Be DURAHIT® Concrete Impregnations

WHAT DO OUR IMPREGNATIONS DO?

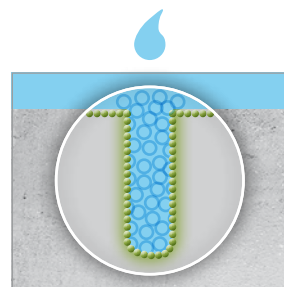
▶ Creating hydrophobic capillaries



CONCRETE STRUCTURE



NORMAL CONCRETE



HA-BE IMPREGNATED CONCRETE

Our Durahit® Concrete Impregnation-Line

IMPREGNATIONS

APPLICATION RANGE

For optimum protection of concrete structures, an additional impregnation may be highly beneficial. Heavily stressed concrete structures that are subject to repeated splashing and drying cycles, require a deeply penetrating impregnation, which provides long-lasting and reliable protection. Areas of application include, but are not limited to:

- ▶ Concrete traffic areas in airport and road constructions
- ▶ Safety barriers
- ▶ Tunnel and underground constructions
- ▶ Bridge constructions
- ▶ Constructions in marine environments and concretes with seawater contact

WORKING PRINCIPLE: HYDROPHOBIC CAPILLARY SYSTEM

Impregnations are applied on concrete surfaces, where they deeply penetrate the surface pores and capillaries. It reacts with the reacts with its cement-based substrates in order to generate a hydrophobic capillary system. This effect reduces the capillary suction and decreases concrete's water absorption abilities. As a result the water uptake and its therein dissolved substances is minimised.

BENEFITS

Impregnations effectively increase the durability of a concrete structure. Despite reducing permeability, they impart other beneficial characteristics like:

- ▶ Optimum water repellence
- ▶ Minimised efflorescence
- ▶ Decreased risk of steel corrosion
- ▶ Reduced risk of carbonation
- ▶ Increased freeze-thaw salt resistance
- ▶ Enhanced durability
- ▶ Attractive long-term appearance
- ▶ Reduced maintenance costs

IMPREGNATIONS

**Ha-Be Betonchemie
GmbH**
Stüvestraße 39
31785 Hameln
Germany
Phone: +49 5151 587 0
info@ha-be.com
www.ha-be.com

**Egyptian German for Specialized
Supplies | Ha-Be Egypt SAE**
80 Al Moltaka Al Arabi St.
Sheraton Al Matar
11361 Cairo | Egypt
Phone: +20 2 206 44 144
office.egypt@ha-be.com
www.ha-be.com

**Ha-Be
Middle East LLC**
P.O. Box 32
Postal Code 118
Muscat | Sultanate of Oman
Phone: +968 24 582 842
office.oman@ha-be.com
www.om.ha-be.com

**Ha-Be
Middle East FZE**
SAIF Zone
P.O. Box 9583
Sharjah | United Arab Emirates
Phone: +971 6 557 2830
office.uae@ha-be.com
www.ha-be.ae